

## MMF case series: M03

Remarkable weight gain of 33.25 grams/day achieved in an ELBW baby through fortification with human milk derived fortifier (MMF)

Case no: 3

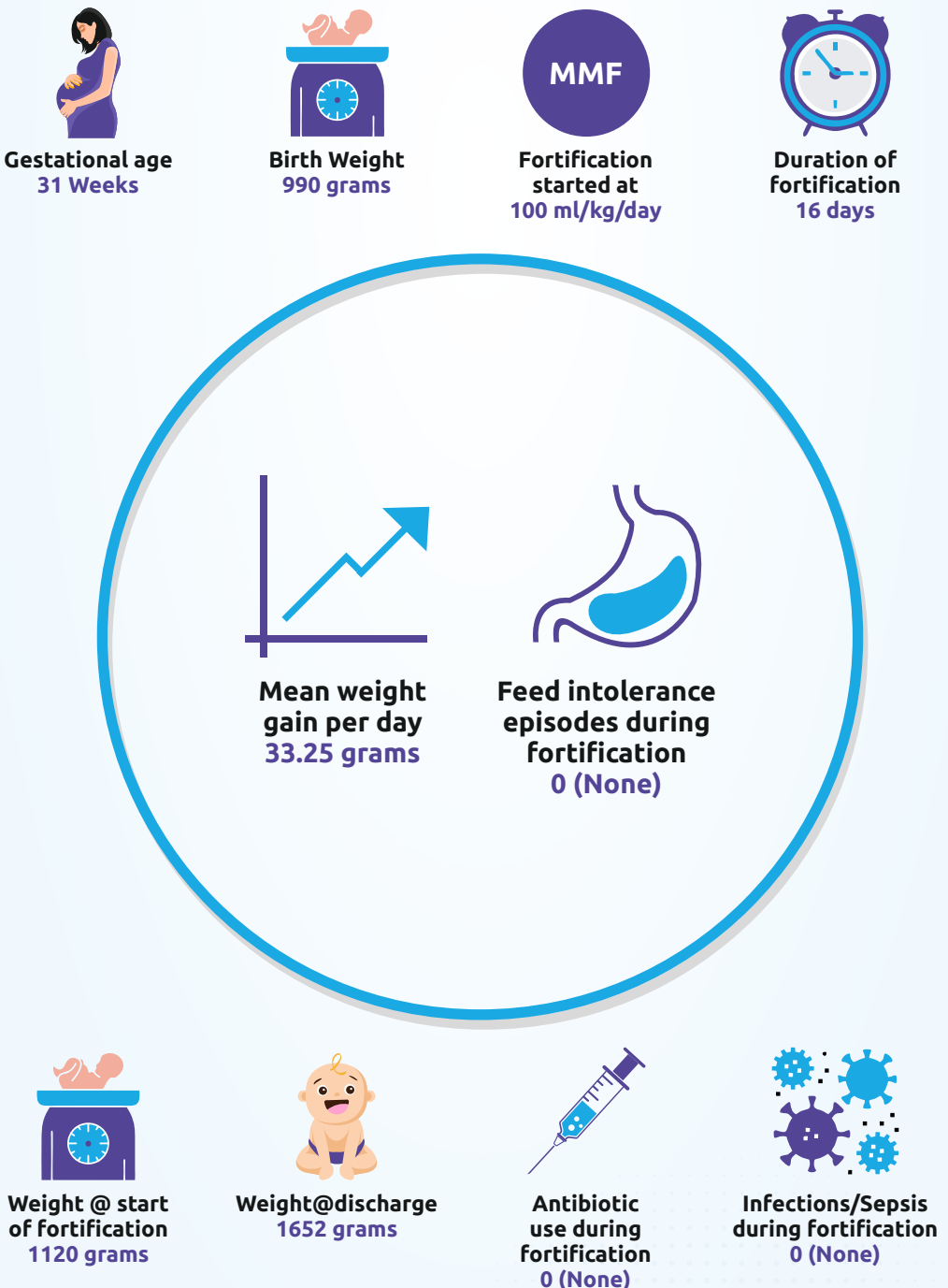
July 2020



**Dr. Sunil Mohan**  
Consultant Neonatologist  
Hyderabad

An extremely low birth weight (ELBW) baby boy, born prematurely at 31 weeks gestation weighing 990 g was admitted in NICU. Trophic feeds were started with mother's own milk and feed volume was slowly increased along with IV nutrition for 4 days, fortification was started on day 8 of life with human milk derived fortifier (NeoLact MMF 1 g) when the baby reached feed volume of 100 ml/kg/day. Fortification with NeoLact MMF was continued till 16 days in NICU, baby had a good overall growth with mean weight gain of 33.25 grams/day. There was no requirement for antibiotics as there were no episodes of infections/sepsis during the period of fortification. Fortified feeds were well tolerated by the baby.

### Baseline parameters and outcomes



**Remarks:** Fortification with human milk derived fortifier (NeoLact MMF) can provide optimal weight gain to premature and ELBW infants in addition to the advantages of 100% human milk diet.